



How to disable driver signature enforcement on W8.1 <i>W8.1 compatibility</i>	W8.1 install
	Installer information

AIIDSP

HOW TO DISABLE DRIVER SIGNATURE VERIFICATION ON 64-BIT WINDOWS 8.1 (SO THAT YOU CAN INSTALL UNSIGNED DRIVERS)

Mark Devlaeminck (author)	Draft (status)		Rev. 0.1
AIIDSP GmbH & Co. KG		Date: 2014-11-14 Page: 1 of 10	



How to disable driver signature enforcement on W8.1 <i>W8.1 compatibility</i>	W8.1 install
	Installer information

REVISION HISTORY

Date	Version	Author	Comments
2014-14-14	0.1	Mark Devlaeminck	Initial version, with thank to howtogeek for initial explanation

Mark Devlaeminck (author)	Draft (status)	Rev. 0.1
AIIDSP GmbH & Co. KG	Date: 2014-11-14 Page: 2 of 10	



How to disable driver signature enforcement on W8.1 <i>W8.1 compatibility</i>	W8.1 install
	Installer information

Table of Contents

1. INTRODUCTION 4

- 1.1 Purpose 4
- 1.2 Scope 4
- 1.3 Definitions, Acronyms and Abbreviations 4
- 1.4 References 4

2. How to Disable Driver Signature Verification on 64-Bit Windows 8.1 5

Mark Devlaeminck (author)	Draft (status)		Rev. 0.1
AIIDSP GmbH & Co. KG		Date: 2014-11-14	Page: 3 of 10



How to disable driver signature enforcement on W8.1 <i>W8.1 compatibility</i>	W8.1 install
	Installer information

1. INTRODUCTION

1.1 Purpose

The purpose of this document is to describe the steps to ensure Windows 8.1 compatibility with respect to the changing Microsoft policy of driver signage.

64-Bit editions of Windows require digitally signed drivers. The problem is that many devices ship with unsigned drivers.

Digitally signed drivers include an electronic fingerprint that indicates which company the driver was produced by as well as an indication as to whether the driver has been modified since the company released it. This increases security, as a signed driver that has been modified will no longer have an intact signature. Drivers are signed using code signing certificates.

1.2 Scope

All Products as applicable. .

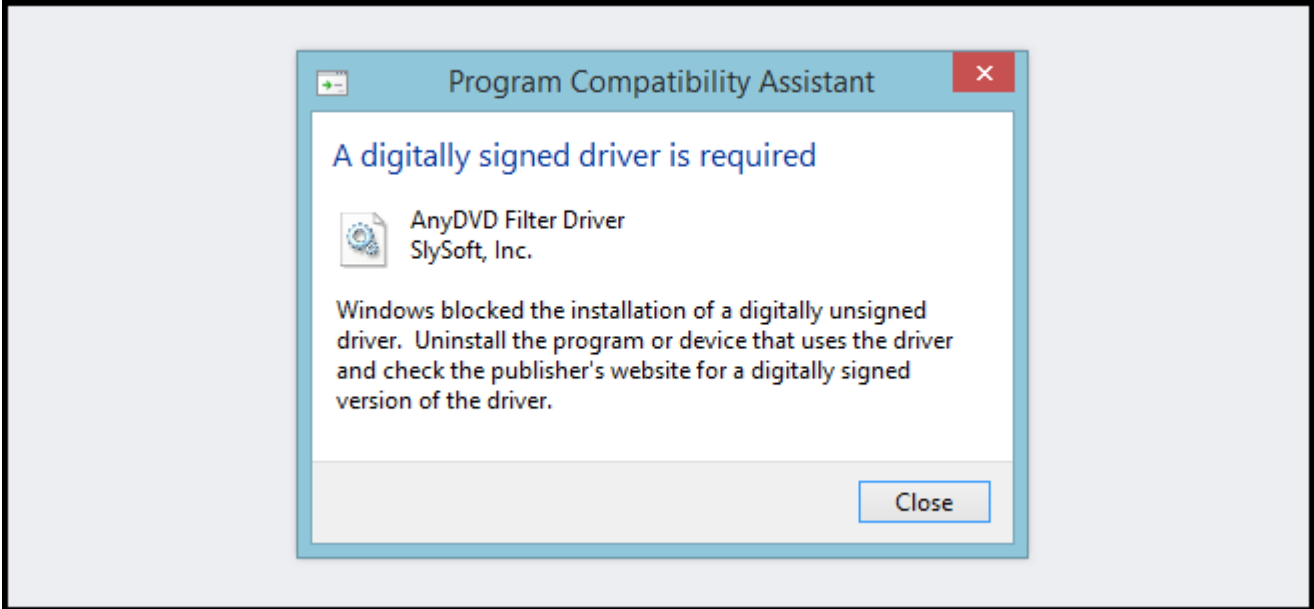
1.3 Definitions, Acronyms and Abbreviations

1.4 References

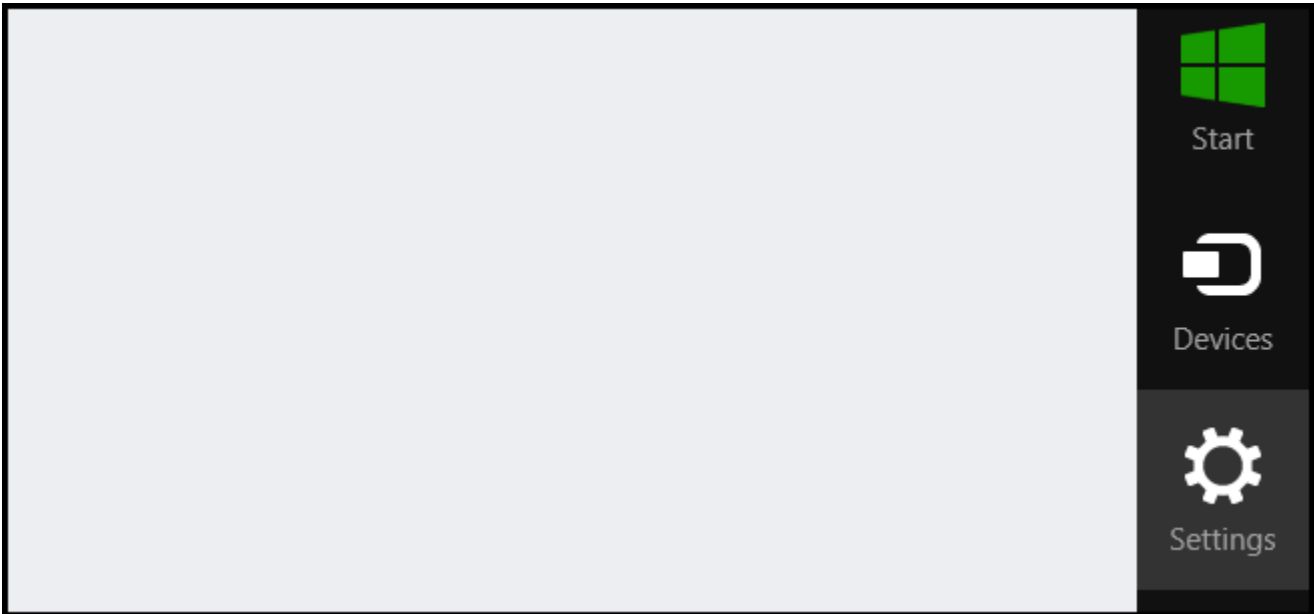
www.howtogeek.com <http://www.howtogeek.com/167723/how-to-disable-driver-signature-verification-on-64-bit-windows-8.1-so-that-you-can-install-unsigned-drivers/>

Mark Devlaeminck (author)	Draft (status)		Rev. 0.1
AIIDSP GmbH & Co. KG			Date: 2014-11-14 Page: 4 of 10

HOW TO DISABLE DRIVER SIGNATURE VERIFICATION ON 64-BIT WINDOWS 8.1

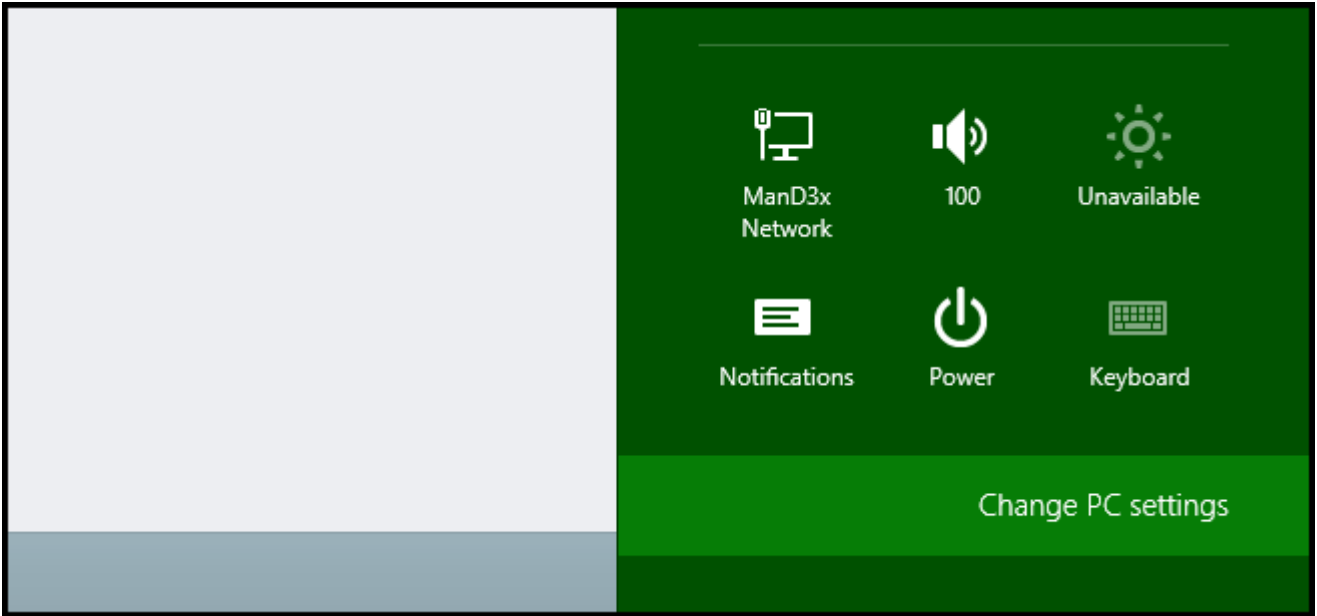


Press the Win + C keyboard combination to bring up the Charms Bar, then click on the Settings Charm.

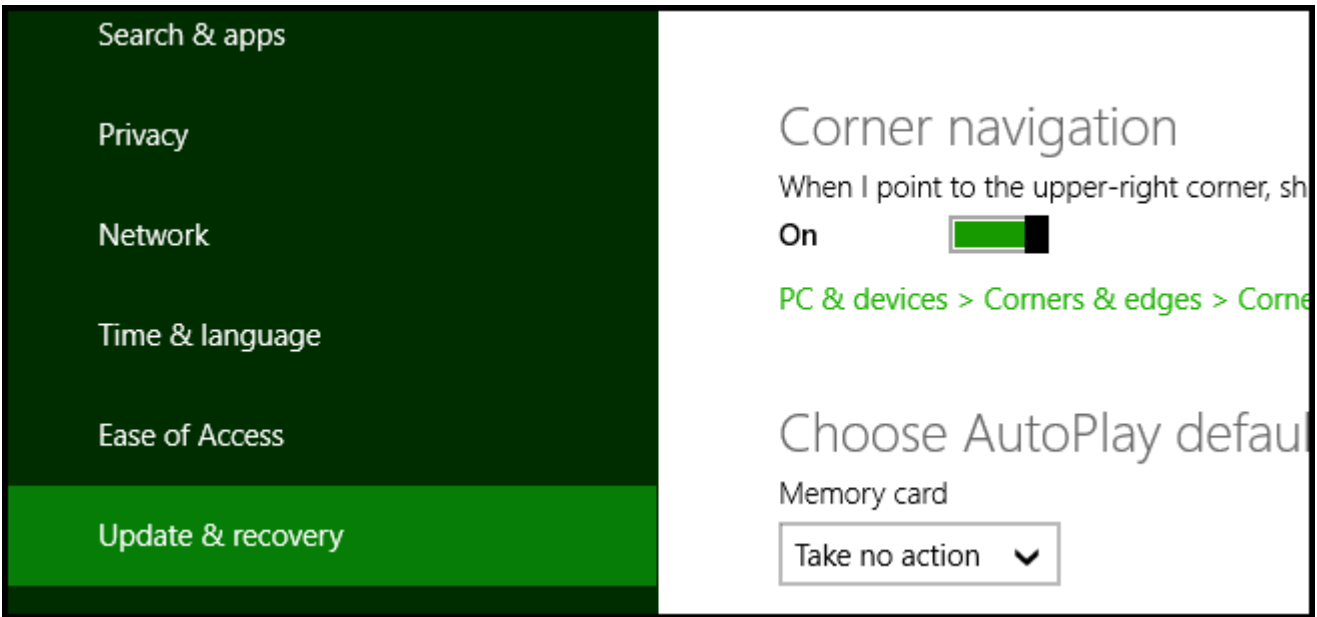


Click on the Change PC settings link.

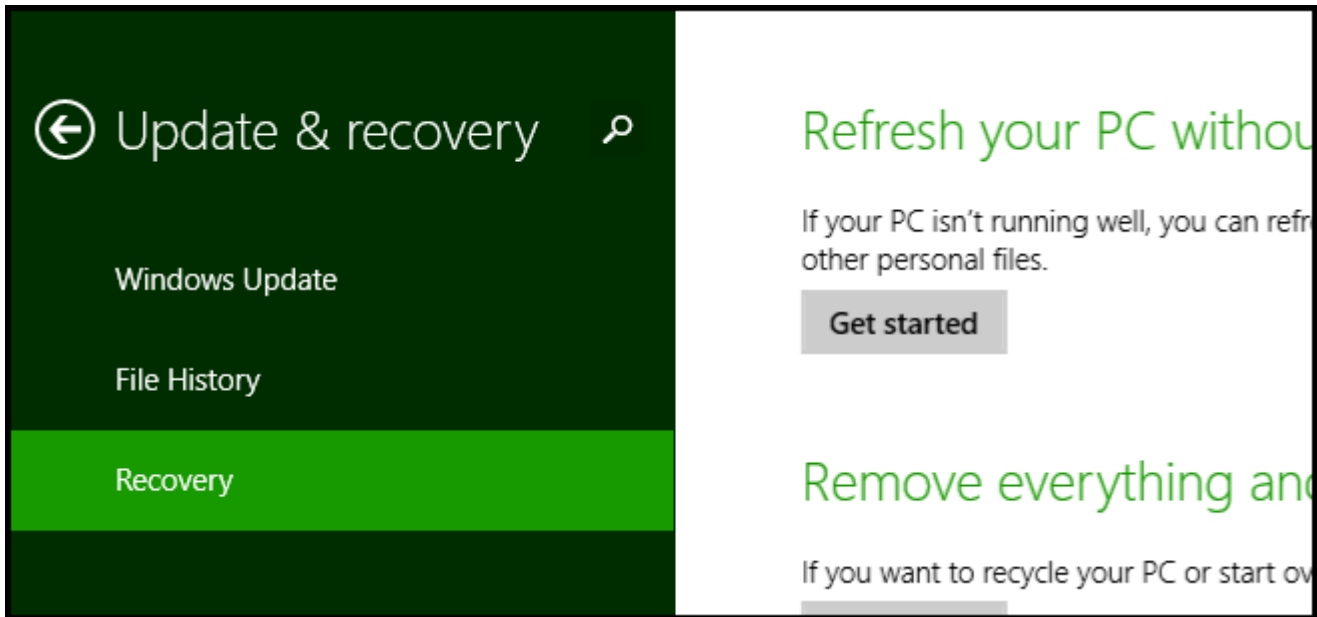
Mark Devlaeminck (author)	Draft (status)	Rev. 0.1
AIIDSP GmbH & Co. KG	Date: 2014-11-14	Page: 5 of 10



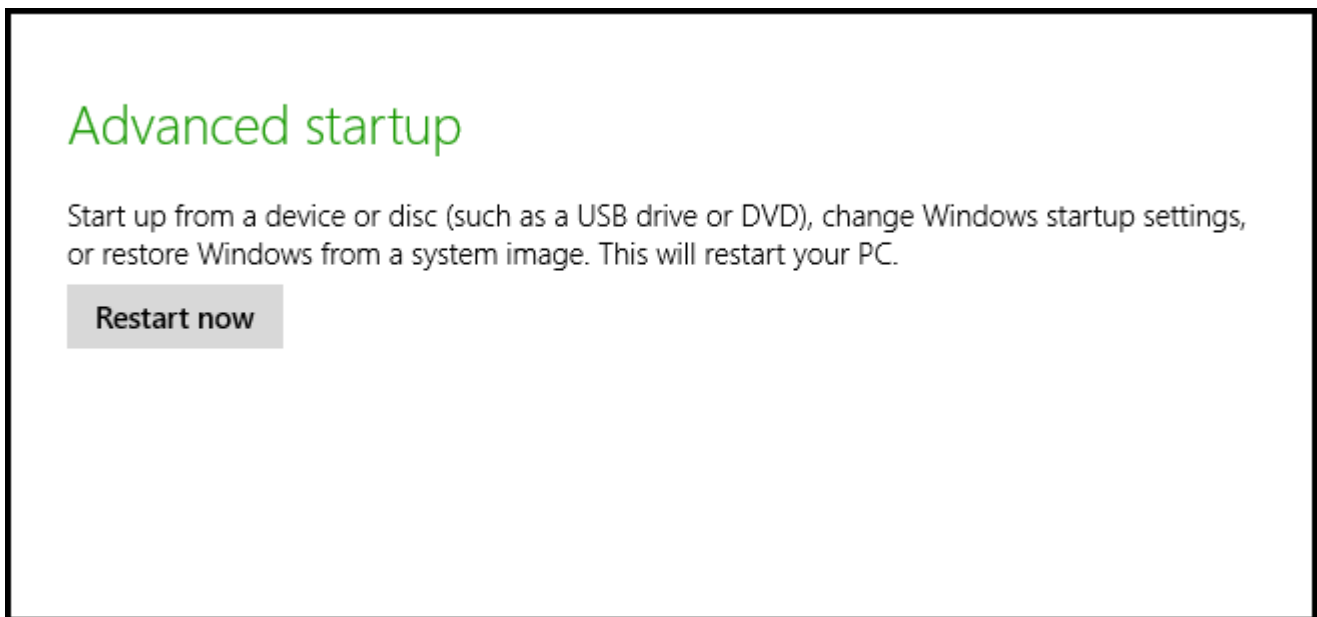
When the Control Panel opens, switch over to the "Update & recovery" section.



Then click on the Recovery option on the left hand side.

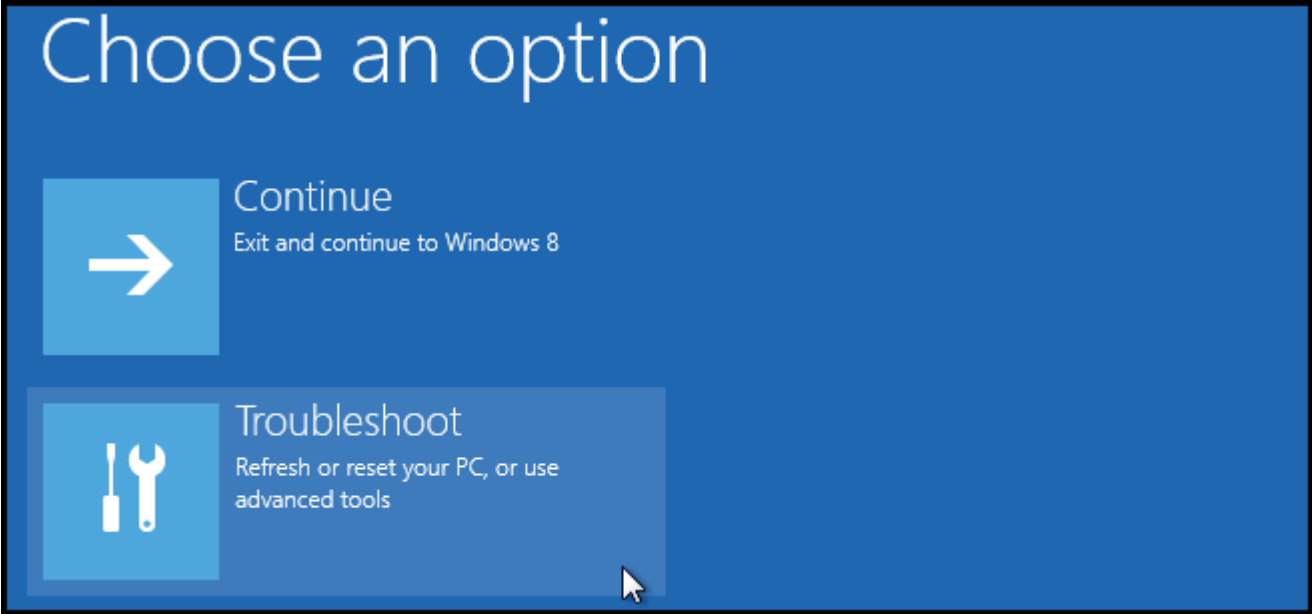


Once selected, you will see an advanced startup section appear on the right hand side. You will need to click on the "Restart now" button.

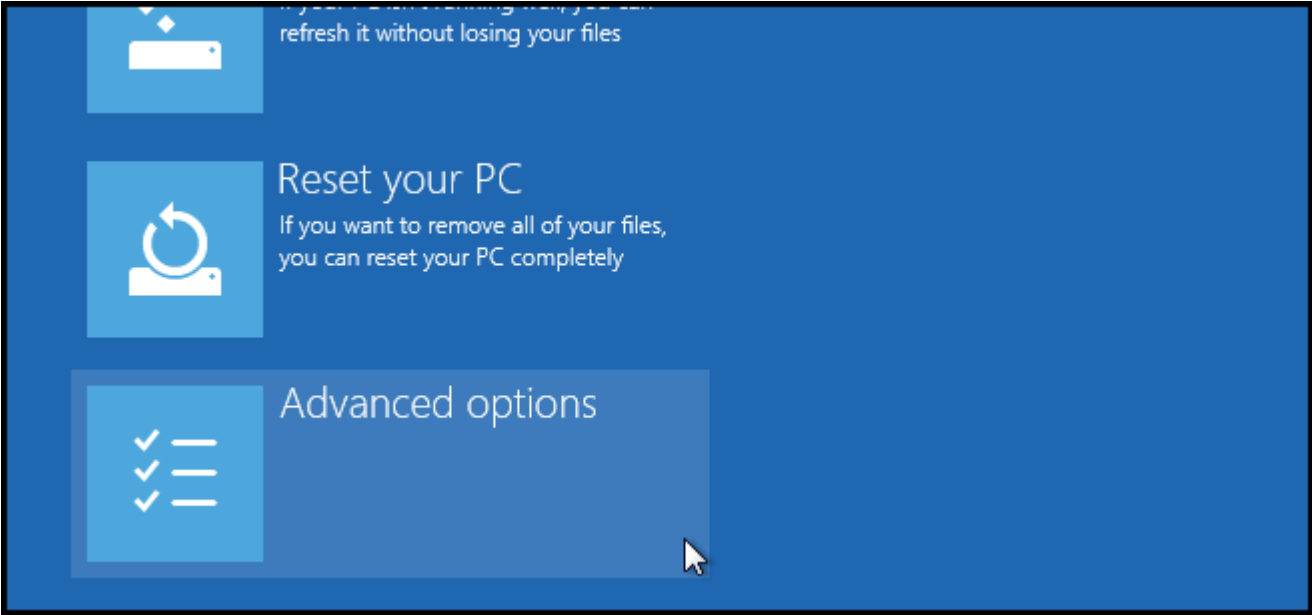


Once your Computer has rebooted you will need to choose the Troubleshoot option.

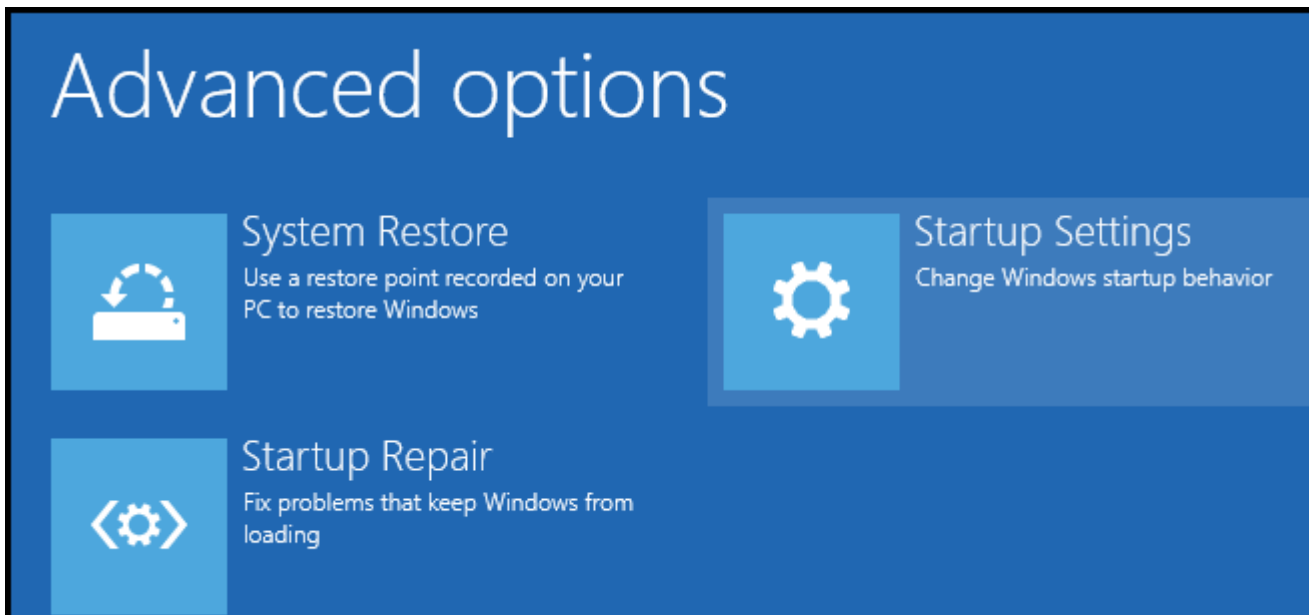
Mark Devlaeminck (author)	Draft (status)		Rev. 0.1
AIIDSP GmbH & Co. KG		Date: 2014-11-14	Page: 7 of 10



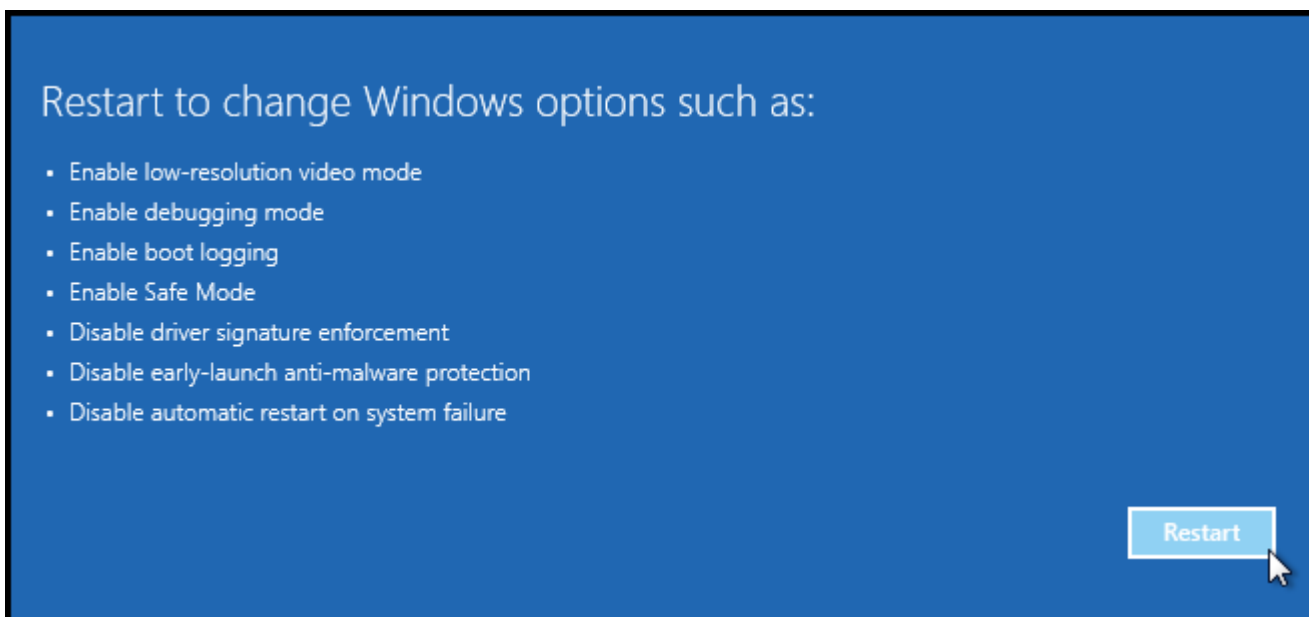
Then head into Advanced options.



Then Startup Settings.



Restart your Computer again.



You will be given a list of startup settings that you can change. The one to look for is "Disable driver signature enforcement". To choose the setting, you will need to press the F7 key.

Mark Devlaeminck (author)	Draft (status)		Rev. 0.1
AIIDSP GmbH & Co. KG		Date: 2014-11-14	Page: 9 of 10

Startup Settings

Press a number to choose from the options below:

Use number keys or functions keys F1-F9.

- 1) Enable debugging
- 2) Enable boot logging
- 3) Enable low-resolution video
- 4) Enable Safe Mode
- 5) Enable Safe Mode with Networking
- 6) Enable Safe Mode with Command Prompt
- 7) Disable driver signature enforcement
- 8) Disable early launch anti-malware protection
- 9) Disable automatic restart after failure

Your PC will then reboot and you will be able to install AIIDSP drivers without any error message.